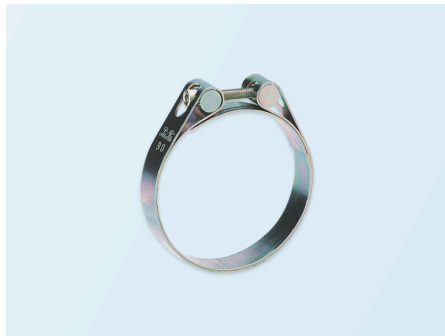


Hose clamps system "Pa-Ri"

SKU: 6170

Pa-Ri system: type 1 hose clamp made of stainless steel.



Material and color

Hauptmaterial: Stainless steel
Material:

Stainless steel (1.4301)

Nominal size	Clamping range min. [mm]	Clamping range max. [mm]	Working pressure [bar]	Working pressure [bar]	Weight [kg]	Band thickness [mm]	Screw dimensions	Article Number
33	28 mm	34 mm	–	–	0.085 kg	1 mm	Allen screw M6 x 45	6170025031
35	30 mm	36 mm	–	–	0.087 kg	1 mm	Allen screw M6 x 45	6170030036
40	35 mm	41 mm	–	–	0.094 kg	1 mm	Allen screw M6 x 45	6170035041
45	40 mm	46 mm	–	–	0.099 kg	1 mm	Allen screw M6 x 45	6170040046
50	45 mm	51 mm	–	–	0.105 kg	1 mm	Allen screw M6 x 45	6170045051
55	50 mm	56 mm	–	–	0.106 kg	1 mm	Allen screw M6 x 45	6170050056
60	55 mm	61 mm	–	–	0.113 kg	1 mm	Allen screw M6 x 45	6170055061
65	60 mm	66 mm	–	–	0.117 kg	1 mm	Allen screw M6 x 45	6170060066
70	65 mm	72 mm	–	–	0.123 kg	1 mm	Allen screw M6 x 45	6170065072
75	70 mm	77 mm	–	–	0.128 kg	1 mm	Allen screw M6 x 45	6170070077
80	75 mm	82 mm	–	–	0.134 kg	1 mm	Allen screw M6 x 45	6170075082
85	80 mm	87 mm	–	–	0.138 kg	1 mm	Allen screw M6 x 45	6170080087
90	85 mm	92 mm	10 bar	10 bar	0.142 kg	1 mm	Allen screw M6 x 45	6170085092
95	90 mm	97 mm	–	–	0.149 kg	1 mm	Allen screw M6 x 45	6170090097
100	95 mm	102 mm	–	–	0.157 kg	1 mm	Allen screw M6 x 45	6170095102
110	105 mm	112 mm	–	–	0.164 kg	1 mm	Allen screw M6 x 45	6170105112
120	115 mm	122 mm	–	–	0.173 kg	1 mm	Allen screw M6 x 45	6170115122
130	125 mm	132 mm	–	–	0.184 kg	1 mm	Allen screw M6 x 45	6170125132
135	130 mm	137 mm	–	–	0.19 kg	1 mm	Allen screw M6 x 45	6170130137

Over and under pressure are recommended operating limits, products can be subjected to higher loads on request. The bending radius is measured through the inside of the hose bend. Subject to technical changes. All specifications are general guide values and refer to 20 °C. Further technical information: www.norres-baggerman.com.

Hose clamps system "Pa-Ri"

SKU: 6170

Nominal size	Clamping range min.	Clamping range max.	Working pressure	Working pressure	Weight	Band thickness	Screw dimensions	Article Number
	[mm]	[mm]	[bar]	[bar]	[kg]	[mm]		
140	135 mm	142 mm	–	–	0.193 kg	1 mm	Allen screw M6 x 45	6170135142
150	145 mm	152 mm	–	–	0.2 kg	1 mm	Allen screw M6 x 45	6170145152
160	155 mm	162 mm	–	–	0.215 kg	1 mm	Allen screw M6 x 45	6170155162
170	165 mm	172 mm	–	–	0.226 kg	1 mm	Allen screw M6 x 45	6170165172
180	175 mm	182 mm	–	–	0.233 kg	1 mm	Allen screw M6 x 45	6170175182
190	185 mm	192 mm	–	–	0.25 kg	1 mm	Allen screw M6 x 45	6170185192
200	195 mm	203 mm	–	–	0.26 kg	1 mm	Allen screw M6 x 45	6170195203