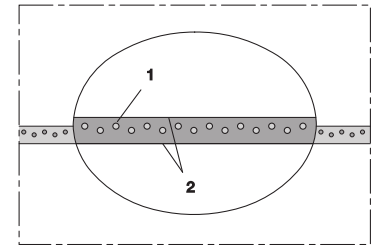
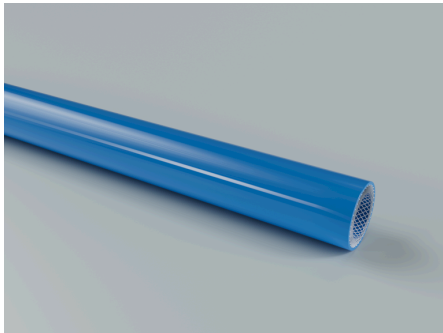


NORFLEX® PUR 441 ROBOTIC BLUE

SKU: 4410400

Highly abrasion-resistant high-pressure hose, fabric-reinforced, ideal as compressed air hose, for coolant conveyance and use in industrial robots.



Design and production

Construction outer cover:
outer layer smooth and extruded

Durability and standards

Standards:
REACH according to --> Technology / Technical Information / REACH
conforms to RoHS guideline

Durability outer cover:
Abrasion-resistant

Material and color

Color of outer cover: Blue

Pressure and temperature

Temperature normal range from: -35 °C
Temperature normal range to: 80 °C

Technical specifications

Medium:
Gas
Dust
Liquid
Solid

Areas of application

Applications:
Air supply hose
Water hose
Cooling water

Industries:
Agricultural industry
Printing industry
Robotics
Environmental and cleaning technology
Welding industry
Pump and compressor industry

Inner diameter	Outer diameter	Working pressure	Burst pressure	Total wall thickness	Bending radius	Max. production length	Weight	Inserts	Length	Article Number
[mm]	[mm]	[bar]	[bar]	[mm]	[mm]	[m]	[kg]		[m]	
6.4 mm	12.7 mm	20 bar	80 bar	3.15 mm	22 mm	50 m	0.13 kg	polyester plies	50 m	44190640400
9.4 mm	16 mm	20 bar	80 bar	3.3 mm	55 mm	100 m	0.149 kg	polyester plies	50 m	44190940400
12.5 mm	19.5 mm	20 bar	80 bar	3.5 mm	69 mm	100 m	0.24 kg	polyester plies	50 m	44191280400
19.5 mm	28.5 mm	20 bar	50 bar	4.5 mm	140 mm	50 m	0.44 kg	polyester plies	50 m	44191900400

Over and under pressure are recommended operating limits, products can be subjected to higher loads on request. The bending radius is measured through the inside of the hose bend. Subject to technical changes. All specifications are general guide values and refer to 20 °C. Further technical information: www.norres-baggerman.com.