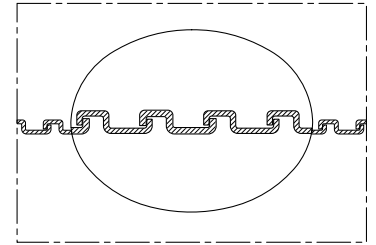
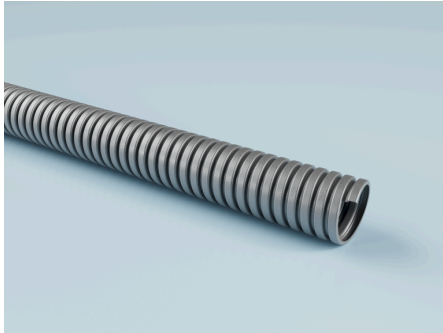


METAL HOSE 101 AD

SKU: 1019010

Highly flexible metal protection conduit, robust, heat-resistant up to 400°C, ideal for cable protection in electrical and switch cabinet installations and switchgear construction.



Durability and standards

Standards:

IP 40 to EN/ IEC 60529
conforms to RoHS guideline

Pressure and temperature

Temperature normal range to: 400 °C

Areas of application

Applications:

Waste gas exhaust
Exhaust air duct
Car gas extraction
Aluminum smelters
Asbestos sanitation
Heaters for construction sites
Construction drying
Coating systems
Extraction of chemical vapours
CNC machines
Overhead heater
Dedusting systems
Spray mist extraction
Film blowing machines
Rock drills
Granulate dryer
Granulate conveying

Wood chips
Wood dust extraction
Industrial vacuum cleaners
Cable protection
Welding fume extraction
Welding robots
Tent heating
Explosion hazard areas
Blow-in insulation
Plant cleaning
Chemical conveying
Chemical transport
Dosing systems
Venting
Waste management technology
Paints and coatings
Grain conveying
Ventilation
Ventilation systems
Compressed air
Sandblasting
Chip extraction
Injection moulding machines
Clothes dryer
Industries:
Chemical industry
Ceramic industry

Textile industry
Construction industry
Printing industry
Energy industry
Glass industry
Wood industry
Mechanical engineering
Cleaning industry
Shipbuilding
Machine tool industry
Cleaning machine industry
Environmental and cleaning technology
Extraction and filtration technology industry
Renewable energy industry
Pump and compressor industry
Fluid technology / flow technology
Screening machine industry
Conveying and processing industry / bulk material technology
Surface technology
Waste and recycling industry
Heating, ventilation, air conditioning and refrigeration (HVAC) industry
Metal industry
Mining industry
Beverage industry

Nominal width connecting parts	Inner diameter	Outer diameter	Bending radius hose center	Max. production length	Weight	Packing unit	Article Number
[mm]	[mm]	[mm]	[mm]	[m]	[kg]	[m]	
10 mm	8 mm	10 mm	25 mm	10 m	5 kg	10 m	10130109010

Over and under pressure are recommended operating limits, products can be subjected to higher loads on request. The bending radius is measured through the inside of the hose bend. Subject to technical changes. All specifications are general guide values and refer to 20 °C. Further technical information: www.norres-baggerman.com.

METAL HOSE 101 AD

SKU: 1019010

Nominal width connecting parts	Inner diameter	Outer diameter	Bending radius hose center	Max. production length	Weight	Packing unit	Article Number
[mm]	[mm]	[mm]	[mm]	[m]	[kg]	[m]	
14 mm	11 mm	14 mm	34 mm	10 m	1.2 kg	10 m	10130149010
17 mm	14 mm	17 mm	40 mm	10 m	0.15 kg	10 m	10130179010
19 mm	16 mm	19 mm	45 mm	10 m	0.16 kg	10 m	10130199010
21 mm	18 mm	21 mm	50 mm	10 m	0.18 kg	10 m	10130219010
27 mm	23 mm	27 mm	67 mm	10 m	3.2 kg	10 m	10130279010
36 mm	31 mm	36 mm	90 mm	10 m	0.46 kg	10 m	10130369010
45 mm	40 mm	45 mm	110 mm	10 m	1 kg	10 m	10130459010
52 mm	47 mm	52 mm	125 mm	10 m	0.1 kg	10 m	10130529010
56 mm	51 mm	56 mm	140 mm	10 m	0.01 kg	10 m	10130569010