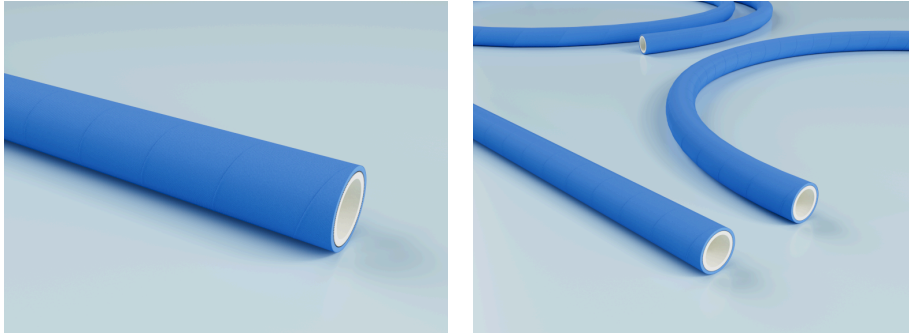


Highly flexible food and cleaning hose, resistant to fats and oils, ideal for transporting and as a cleaning hose in commercial kitchens.



Description

Imprint: Vaporcord®/Alim/Extra - Steamhose / Dampfschlauch Hot Water PN .. bar max. 100°C / Steam PN 6 bar max. 164°C - EG1935/2004 - BFR XXI Kat. 2 - FDA CFR 21 § 177.2600

Design and production

Inner tube:

Smooth

Durability and standards

Durability inner tube core:

Up to max. 15% alcohol

Standards:

FDA (CFR 21 § 177.2600)

EN ISO 1307:2008

EU 1935/2004

BfR XXI:2002 (Cat. 2)

Durability outer cover:

Vegetable fats

Animal fats

Poultry fat

Food standards:

BfR XXI:2002 (Cat. 2)

EU 1935/2004

(GMP) EU 2023/2006

Material and colour

Colour of inner tube core: White

Colour of outer coating: Blue

Material outer cover:

Modified elastomer

Material inner tube:

NBR

Pressure and temperature

Temperature normal range from: -35 °C

Max. temperature steam: 164 °C

Max. temperature hot water: 100 °C

Areas of application

Applications:

Extraction of chemical vapours

Steam soaking

Filling systems

Steam cleaning

Beverage filling

Food production & conveying

Dairy products

Milk processing

Industries:

Chemical industry

Food industry

Pharmaceutical industry

Cleaning industry

Beverage industry

Technical specifications

Medium:

Liquid

Inner diameter [mm]	Outer diameter [mm]	Working pressure [bar]	Working pressure [bar]	Burst pressure [bar]	Total wall thickness [mm]	Bending radius [mm]	Max. production length [m]	Weight [kg]	Length [m]	Inserts	Max. operating pressure steam [bar]	Burst pressure steam [bar]	Max. operating pressure hot water [bar]	Article Number
10 mm	19 mm	6 bar	0 bar	90 bar	4.5 mm	55 mm	40 m	0.29 kg	40 m	textile plies	6 bar	60 bar	30 bar	3406010000
13 mm	23 mm	6 bar	0 bar	90 bar	5 mm	65 mm	40 m	0.43 kg	40 m	textile plies	6 bar	60 bar	30 bar	3406013000
19 mm	31 mm	6 bar	0 bar	90 bar	6 mm	100 mm	40 m	0.6 kg	40 m	textile plies	6 bar	60 bar	30 bar	3406019000
25 mm	37 mm	6 bar	0 bar	90 bar	6 mm	125 mm	40 m	0.8 kg	40 m	textile plies	6 bar	60 bar	30 bar	3406025000

SKU: 3406

Inner diameter [mm]	Outer diameter [mm]	Working pressure [bar]	Working pressure [bar]	Burst pressure [bar]	Total wall thickness [mm]	Bending radius [mm]	Max. production length [m]	Weight [kg]	Length [m]	Inserts	Max. operating pressure steam [bar]	Burst pressure steam [bar]	Max. operating pressure hot water [bar]	Article Number
32 mm	46 mm	6 bar	0 bar	60 bar	7 mm	195 mm	40 m	1.1 kg	40 m	textile plies	6 bar	60 bar	20 bar	3406032000
38 mm	54 mm	6 bar	0 bar	60 bar	8 mm	250 mm	40 m	1.6 kg	40 m	textile plies	6 bar	60 bar	20 bar	3406038000
50 mm	66 mm	6 bar	0 bar	60 bar	8 mm	350 mm	40 m	1.8 kg	40 m	textile plies	6 bar	60 bar	20 bar	3406050000