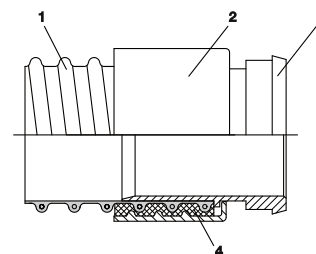
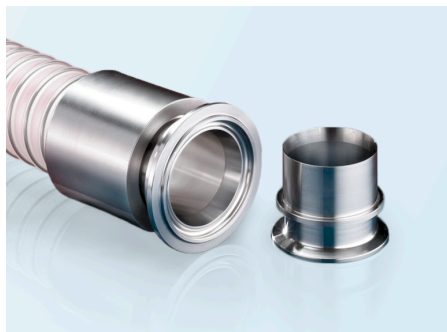


CONNECT PRESS ASSEMBLY 232 CLAMP SYSTEM for 355

SKU: 2322972

Vergossenes Kupplungssystem, lebensmittelecht, chemikalien- und mikrobebeständig, ideal für den Einsatz in der Lebensmittel- und Pharmaindustrie.



Compatibility

Suitable for hose: AIRDUC® 355

Durability and standards

Standards:

REACH according to --> Technology / Technical Information / REACH

conforms to RoHS guideline

Dichteinsatz lebensmittelecht nach: FDA 21 CFR 177.2600 und 178.2010, EU-Verordnung 10/2011, EG 1935/2004 und EU 2015/174

Material and colour

Hauptmaterial: Stainless steel

Material seal: Polyurethane

Material:

Stainless steel (1.4404)

Pressure and temperature

Temperature normal range from: -40 °C

Temperature normal range to: 90 °C

Nominal width	Nominal size	For hose internal diameter	Max. production length	Weight	Article Number
[mm]		[mm]	[m]	[kg]	
25 mm	25 mm	25 mm	0 m	0.23 kg	23200252972
32 mm	32 mm	32 mm	0 m	0.25 kg	23200322972
50 mm	50 mm	50 mm	0 m	0.4 kg	23200502972
65 mm	65 mm	65 mm	0 m	0.48 kg	23200652972
75 mm	75 mm	75 mm	0 m	0.54 kg	23200752972
80 mm	80 mm	80 mm	0 m	0.62 kg	23200802972
100 mm	100 mm	100 mm	0 m	0.67 kg	23201002972