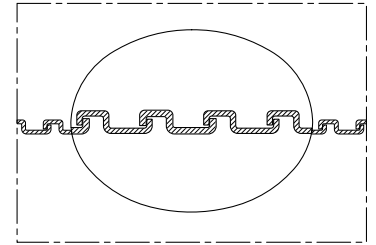
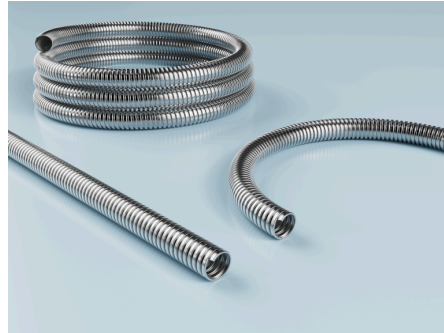
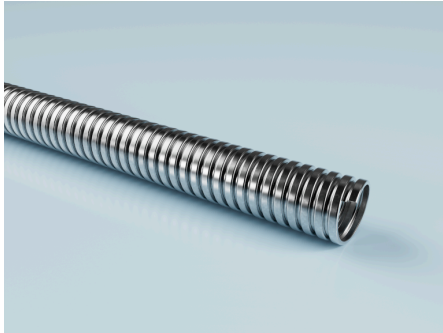


METAL HOSE VA 108 AD

SKU: 1089025

Highly flexible stainless steel protection conduit, heat-resistant up to 600°C, ideal for cable protection in electrical and switch cabinet installations and switchgear construction.



Durability and standards

Standards:

IP 40 to EN/ IEC 60529
conforms to RoHS guideline

Pressure and temperature

Temperature normal range to: 600 °C

Areas of application

Applications:

Waste gas exhaust
Exhaust air duct
Car gas extraction
Aluminium smelters
Asbestos sanitation
Heaters for construction sites
Construction drying
Coating systems
Extraction of chemical vapours
CNC machines
Overhead heater
Dedusting systems
Spray mist extraction
Film blowing machines
Rock drills
Granulate dryer
Granulate conveying

Wood chips
Wood dust extraction
Industrial vacuum cleaners
Cable protection
Welding fume extraction
Welding robots
Tent heating
Explosion hazard areas
Blow-in insulation
Plant cleaning
Chemical conveying
Chemical transport
Dosing systems
Venting
Waste management technology
Paints and coatings
Grain conveying
Ventilation
Ventilation systems
Compressed air
Sandblasting
Chip extraction
Injection moulding machines
Tumble dryer
Industries:
Chemical industry
Ceramic industry

Textile industry
Construction industry
Printing industry
Energy industry
Glass industry
Wood industry
Mechanical engineering
Cleaning industry
Shipbuilding
Machine tool industry
Cleaning machine industry
Environmental and cleaning technology
Extraction and filtration technology industry
Renewable energy industry
Pump and compressor industry
Fluid technology / flow technology
Screening machine industry
Conveying and processing industry / bulk material technology
Surface technology
Waste and recycling industry
Heating, ventilation, air conditioning and refrigeration (HVAC) industry
Metal industry
Mining industry
Beverage industry

Nominal width connecting parts	Inner diameter	Outer diameter	Bending radius hose center	Max. production length	Weight	Packing unit	Article Number
[mm]	[mm]	[mm]	[mm]	[m]	[kg]	[m]	
45 mm	40 mm	45 mm	110 mm	25 m	17.5 kg	25 m	10830459025

Overpressure and underpressure are recommended operating limits; products can be subjected to higher loads on request. The bend radius is measured along the inside of the hose bend. Subject to technical changes. All specifications are general guide values and refer to 20 °C. Further technical information: www.norres-baggerman.com.