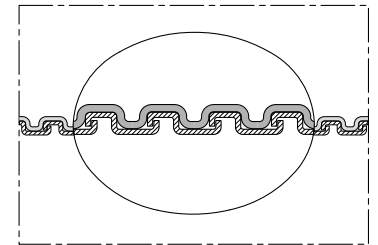
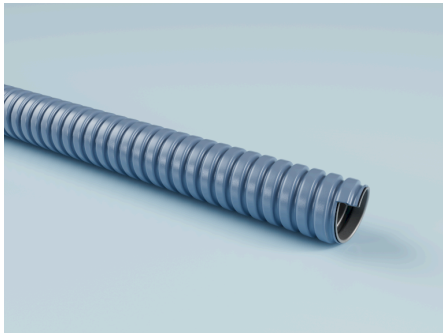


METAL HOSE PUR 105 AD

SKU: 1059025

Very robust metal protection hose with PU coating, highly flexible, liquid-tight, ideal for cable protection in electrical and switch cabinet installations and switchgear construction.



Durability and standards

Standards:

IP 68 to EN/ IEC 60529
conforms to RoHS guideline

Material and colour

Colour:

metallic blue

Pressure and temperature

Temperature normal range from: -40 °C

Temperature normal range to: 90 °C

Short-term temperature peak: 125 °C

Areas of application

Applications:

Waste gas exhaust
Exhaust air duct
Car gas extraction
Aluminium smelters
Asbestos sanitation
Heaters for construction sites
Construction drying
Coating systems
Extraction of chemical vapours
CNC machines
Overhead heater
Dedusting systems
Spray mist extraction

Film blowing machines

Rock drills

Granulate dryer

Granulate conveying

Wood chips

Wood dust extraction

Industrial vacuum cleaners

Cable protection

Welding fume extraction

Welding robots

Tent heating

Explosion hazard areas

Blow-in insulation

Plant cleaning

Chemical conveying

Chemical transport

Dosing systems

Venting

Waste management technology

Paints and coatings

Grain conveying

Ventilation

Ventilation systems

Compressed air

Sandblasting

Chip extraction

Injection moulding machines

Tumble dryer

Industries:

Chemical industry

Ceramic industry

Textile industry

Construction industry

Printing industry

Energy industry

Glass industry

Wood industry

Mechanical engineering

Cleaning industry

Shipbuilding

Machine tool industry

Cleaning machine industry

Environmental and cleaning technology

Extraction and filtration technology industry

Renewable energy industry

Pump and compressor industry

Fluid technology / flow technology

Screening machine industry

Conveying and processing industry / bulk material technology

Surface technology

Waste and recycling industry

Heating, ventilation, air conditioning and refrigeration (HVAC) industry

Metal industry

Mining industry

Beverage industry

METAL HOSE PUR 105 AD

SKU: 1059025

Nominal width connecting parts	Inner diameter	Bending radius hose center	Dynamic bending radius	Max. production length	Weight	Packing unit	Article Number
[mm]	[mm]	[mm]	[mm]	[m]	[kg]	[m]	
36 mm	29 mm	110 mm	110 mm	25 m	13.18 kg	25 m	10530369025
45 mm	38 mm	140 mm	140 mm	25 m	17.37 kg	25 m	10530459025
56 mm	49 mm	175 mm	175 mm	25 m	22.64 kg	25 m	10530569025