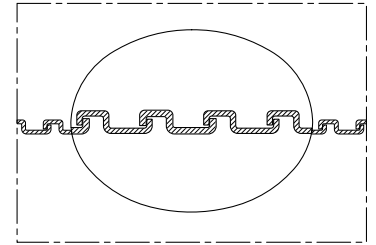
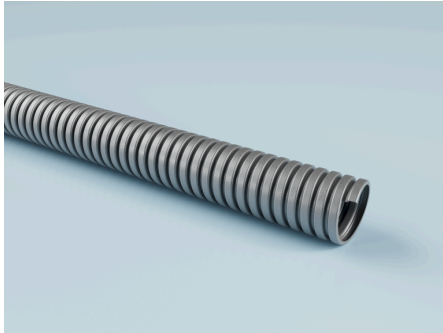


# METAL HOSE 101 AD

SKU: 1019025

Highly flexible metal protection conduit, robust, heat-resistant up to 400°C, ideal for cable protection in electrical and switch cabinet installations and switchgear construction.



## Durability and standards

### Standards:

conforms to RoHS guideline  
IP 40 to EN/ IEC 60529

## Pressure and temperature

Temperature normal range to: 400 °C

## Areas of application

### Applications:

Waste gas exhaust  
Exhaust air duct  
Car gas extraction  
Aluminium smelters  
Asbestos sanitation  
Heaters for construction sites  
Construction drying  
Coating systems  
Extraction of chemical vapours  
CNC machines  
Overhead heater  
Dedusting systems  
Spray mist extraction  
Film blowing machines  
Rock drills  
Granulate dryer  
Granulate conveying

Wood chips  
Wood dust extraction  
Industrial vacuum cleaners  
Cable protection  
Welding fume extraction  
Welding robots  
Tent heating  
Explosion hazard areas  
Blow-in insulation  
Plant cleaning  
Chemical conveying  
Chemical transport  
Dosing systems  
Venting  
Waste management technology  
Paints and coatings  
Grain conveying  
Ventilation  
Ventilation systems  
Compressed air  
Sandblasting  
Chip extraction  
Injection moulding machines  
Tumble dryer  
**Industries:**  
Chemical industry  
Ceramic industry

Textile industry  
Construction industry  
Printing industry  
Energy industry  
Glass industry  
Wood industry  
Mechanical engineering  
Cleaning industry  
Shipbuilding  
Machine tool industry  
Cleaning machine industry  
Environmental and cleaning technology  
Extraction and filtration technology industry  
Renewable energy industry  
Pump and compressor industry  
Fluid technology / flow technology  
Screening machine industry  
Conveying and processing industry / bulk material technology  
Surface technology  
Waste and recycling industry  
Heating, ventilation, air conditioning and refrigeration (HVAC) industry  
Metal industry  
Mining industry  
Beverage industry

Nominal width connecting parts	Inner diameter	Outer diameter	Bending radius hose center	Max. production length	Weight	Packing unit	Article Number
[ mm ]	[ mm ]	[ mm ]	[ mm ]	[ m ]	[ kg ]	[ m ]	
34 mm	29 mm	34 mm	88 mm	25 m	0.21 kg	25 m	10130349025

Overpressure and underpressure are recommended operating limits; products can be subjected to higher loads on request. The bend radius is measured along the inside of the hose bend. Subject to technical changes. All specifications are general guide values and refer to 20 °C. Further technical information: [www.norres-baggerman.com](http://www.norres-baggerman.com).

# METAL HOSE 101 AD

SKU: 1019025

Nominal width connecting parts	Inner diameter	Outer diameter	Bending radius hose center	Max. production length	Weight	Packing unit	Article Number
[ mm ]	[ mm ]	[ mm ]	[ mm ]	[ m ]	[ kg ]	[ m ]	
-	31 mm	43 mm	-	25 m	-	25 m	10130439025
36 mm	31 mm	36 mm	90 mm	25 m	0.46 kg	25 m	10130369025
45 mm	40 mm	45 mm	110 mm	25 m	15 kg	25 m	10130459025
52 mm	47 mm	52 mm	125 mm	25 m	5 kg	25 m	10130529025
56 mm	51 mm	56 mm	140 mm	25 m	0.01 kg	25 m	10130569025