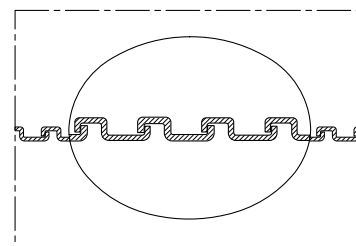
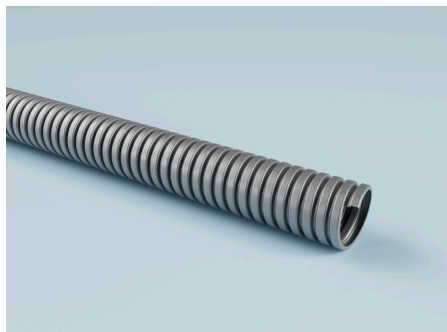


METAL HOSE 101 AD

SKU: 1019010

Highly flexible metal protection conduit, robust, heat-resistant up to 400°C, ideal for cable protection in electrical and switch cabinet installations and switchgear construction.



Durability and standards

Standards:

IP 40 to EN/ IEC 60529

conforms to RoHS guideline

Pressure and temperature

Temperature normal range to: 400 °C

Areas of application

Applications:

- Waste gas exhaust
- Exhaust air duct
- Car gas extraction
- Aluminium smelters
- Asbestos sanitation
- Heaters for construction sites
- Construction drying
- Coating systems
- Extraction of chemical vapours
- CNC machines
- Overhead heater
- Dedusting systems
- Spray mist extraction
- Film blowing machines
- Rock drills
- Granulate dryer
- Granulate conveying

- Wood chips
- Wood dust extraction
- Industrial vacuum cleaners
- Cable protection
- Welding fume extraction
- Welding robots
- Tent heating
- Explosion hazard areas
- Blow-in insulation
- Plant cleaning
- Chemical conveying
- Chemical transport
- Dosing systems
- Venting
- Waste management technology
- Paints and coatings
- Grain conveying
- Ventilation
- Ventilation systems
- Compressed air
- Sandblasting
- Chip extraction
- Injection moulding machines
- Tumble dryer
- Industries:**
- Chemical industry
- Ceramic industry

- Textile industry
- Construction industry
- Printing industry
- Energy industry
- Glass industry
- Wood industry
- Mechanical engineering
- Cleaning industry
- Shipbuilding
- Machine tool industry
- Cleaning machine industry
- Environmental and cleaning technology
- Extraction and filtration technology industry
- Renewable energy industry
- Pump and compressor industry
- Fluid technology / flow technology
- Screening machine industry
- Conveying and processing industry / bulk material technology
- Surface technology
- Waste and recycling industry
- Heating, ventilation, air conditioning and refrigeration (HVAC) industry
- Metal industry
- Mining industry
- Beverage industry

Nominal width connecting parts	Inner diameter	Outer diameter	Bending radius hose center	Max. production length	Weight	Packing unit	Article Number
[mm]	[mm]	[mm]	[mm]	[m]	[kg]	[m]	
10 mm	8 mm	10 mm	25 mm	10 m	5 kg	10 m	10130109010
14 mm	11 mm	14 mm	34 mm	10 m	1.2 kg	10 m	10130149010

Overpressure and underpressure are recommended operating limits; products can be subjected to higher loads on request. The bend radius is measured along the inside of the hose bend. Subject to technical changes. All specifications are general guide values and refer to 20 °C. Further technical information: www.norres-baggerman.com.

METAL HOSE 101 AD

SKU: 1019010

Nominal width connecting parts [mm]	Inner diameter [mm]	Outer diameter [mm]	Bending radius hose center [mm]	Max. production length [m]	Weight [kg]	Packing unit [m]	Article Number
17 mm	14 mm	17 mm	40 mm	10 m	0.15 kg	10 m	10130179010
19 mm	16 mm	19 mm	45 mm	10 m	0.16 kg	10 m	10130199010
21 mm	18 mm	21 mm	50 mm	10 m	0.18 kg	10 m	10130219010
27 mm	23 mm	27 mm	67 mm	10 m	3.2 kg	10 m	10130279010
36 mm	31 mm	36 mm	90 mm	10 m	0.46 kg	10 m	10130369010
45 mm	40 mm	45 mm	110 mm	10 m	1 kg	10 m	10130459010
52 mm	47 mm	52 mm	125 mm	10 m	0.1 kg	10 m	10130529010
56 mm	51 mm	56 mm	140 mm	10 m	0.01 kg	10 m	10130569010